

# **End Statement Report** **FY11 (07/01/10 – 06/30/11)** **Workforce Preparation**

**Adult Education**  
**Mark Jansen, Director**  
*October 25, 2011*

# Adult Education FY11 Staff & Instructors

## Adult Education (AE)

### Administrative & Classified Staff

- Mark Jansen  
*Director, Adult Education*
- Jerelyn Forman  
*Coordinator, AE Instructional Services*
- Meagan Smith  
*Coordinator, AE Student Support Services*
- Esther Mayer  
*Coordinator, AE Volunteer Services (PT)*
- Ellen Rice  
*AE Grant Data Analyst*
- Dawn Switzer  
*AE Secretary*

### Outreach Part-Time Instructors

- Victoria Finfrock (Mt Morris ABE/ASE)
- Linda Jachino (West ABE/ASE)

### HCC Part-Time Instructors

- Cheri Heise – ABE/ASE
- Marsha Holden – ABE
- Julia Hulbert – ABE
- Julie Janssen - Constitution
- Nikola Jurkovic – ABE/ASE
- Joyce Vogt-LeBaron – ESL, Constitution
- Sally Wagner – ABE
- Kathy Young – ASE
- Jaclyn Lambert, Child & Parent Literacy Educator (PT)
- Linda Roderick, Child & Parent Literacy Educator (PT)

ABE – Adult Basic Education

ASE – Adult Secondary Education

ESL – English as a Second Language

# Adult Education Services

## FY11 (7/01/10 – 6/30/11)

- **Basic Skills/ABE**
- **GED Preparation/ASE**
- **Constitution**
- **English as a Second Language**
- **Transition to HCC**
- **Transition to Work**
- **Family Literacy**  
*(funded by SOS Family Literacy)*
  - Adult Education/Tutoring
  - Early Childhood Education
  - Parent Education
  - Parent & Child Interactive Literacy
  - Library Literacy Activities
- **SOS Adult Volunteer Literacy**

# Adult Education FY11 Student Population & Ethnic Origin

APC 519		2009 Adult Population (16 & over) and Ethnic				
		Total	Carroll	JoDavieess	Ogle	Stephenson
<b>Total Population</b>	Total Pop.	88,901	11,357	21,990	9,607	45,947
<b>Total Adult Population (16 and over)</b>	Total Pop.	71,800	9,328	18,058	7,563	36,851
	Total Males	34,905	4,512	8,895	3,703	17,795
	Total Females	36,895	4,816	9,163	3,860	19,056
<b>Caucasian Am</b>	Total	66,142	8,886	17,619	7,374	32,263
<b>African Am</b>	Total	3,254	114	119	39	2,982
<b>Native Am</b>	Total	184	25	53	21	86
<b>Asian Am</b>	Total	425	51	37	24	314
<b>Other Am</b>	Total	792	153	105	49	485
<b>Hispanic Am</b>	Total	1,922	260	533	173	956
<b>Pacific Is</b>	Total	31	3	4	5	19
<b>2 or More</b>	Total	971	96	121	52	702
<i>Source: David Ault, SIU October 15, 2010</i>						

# Adult Education FY11 District Needs ~ Students Served

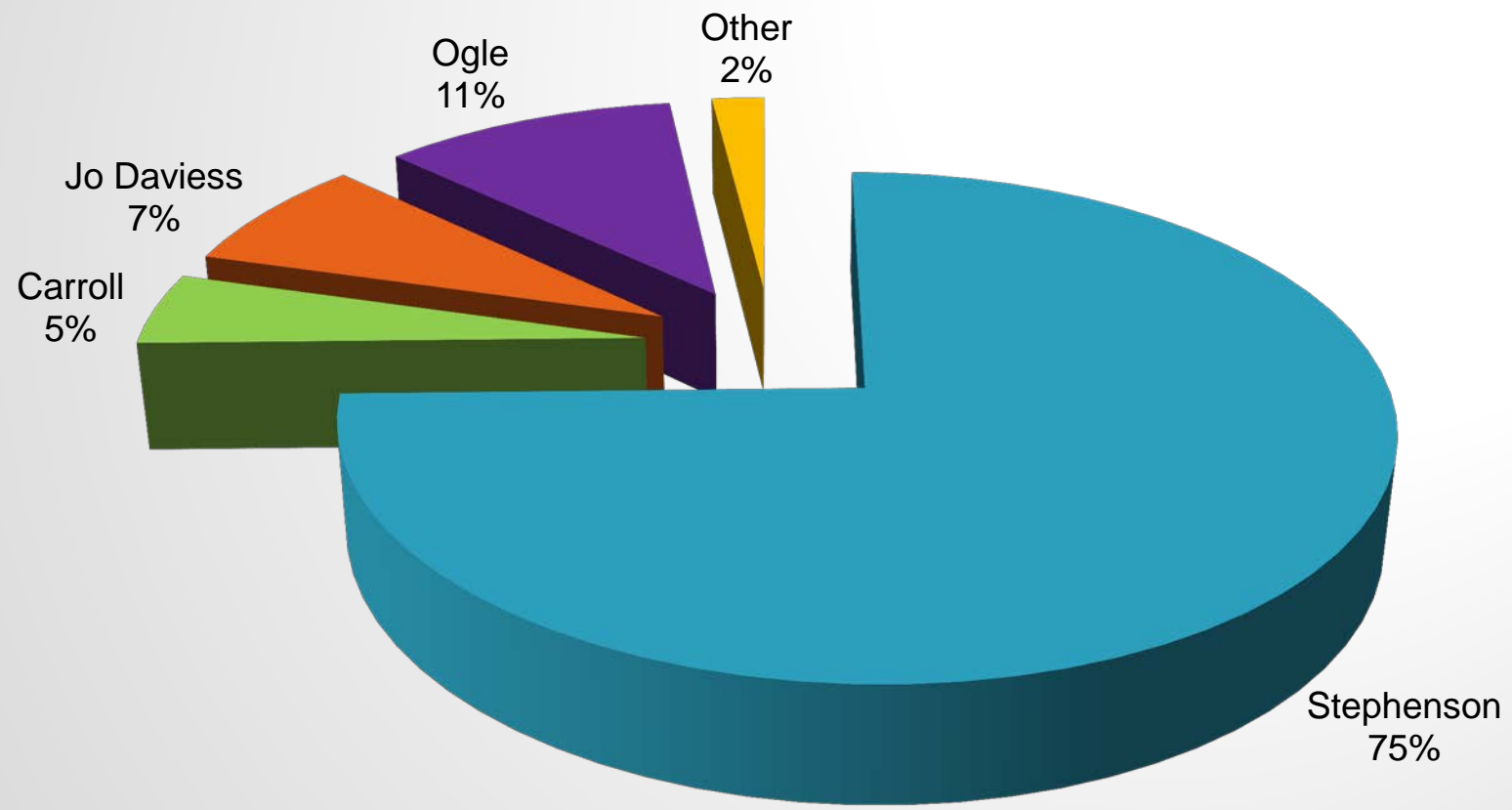
ADULT EDUCATION CATEGORY		Need #	Served #	Served %
TOTALS	District #519 Adults Eligible	14,055	347	2%
	Adults with 0-9 years of education	4,079	199	5%
	Adults with 9-12 years of education, with no diploma	7,390	106	1%
	English-as-a-Second Language adults	2,586	42	2%
	Adults in poverty	6,153	133	2%
CARROLL COUNTY	Adults with 0-9 years of education	675	6	1%
	Adults with 9-12 years of education, with no diploma	1,165	7	1%
	English-as-a-Second Language adults	417	4	1%
	Adults in poverty	813	2	0%
STEPHENSON COUNTY	Adults with 0-9 years of education	1,909	162	8%
	Adults with 9-12 years of education, with no diploma	3,846	68	2%
	English-as-a-Second Language adults	1,423	35	2%
	Adults in poverty	3,314	117	4%
JODAVIESS COUNTY	Adults with 0-9 years of education	1,166	12	1%
	Adults with 9-12 years of education, with no diploma	1,584	12	1%
	English-as-a-Second Language adults	493	3	1%
	Adults in poverty	1,471	6	0%
OGLE COUNTY	Adults with 0-9 years of education	329	19	6%
	Adults with 9-12 years of education, with no diploma	795	19	2%
	English-as-a-Second Language adults	253	0	0%
	Adults in poverty	555	8	1%

**Total Adult Population: 71,800**

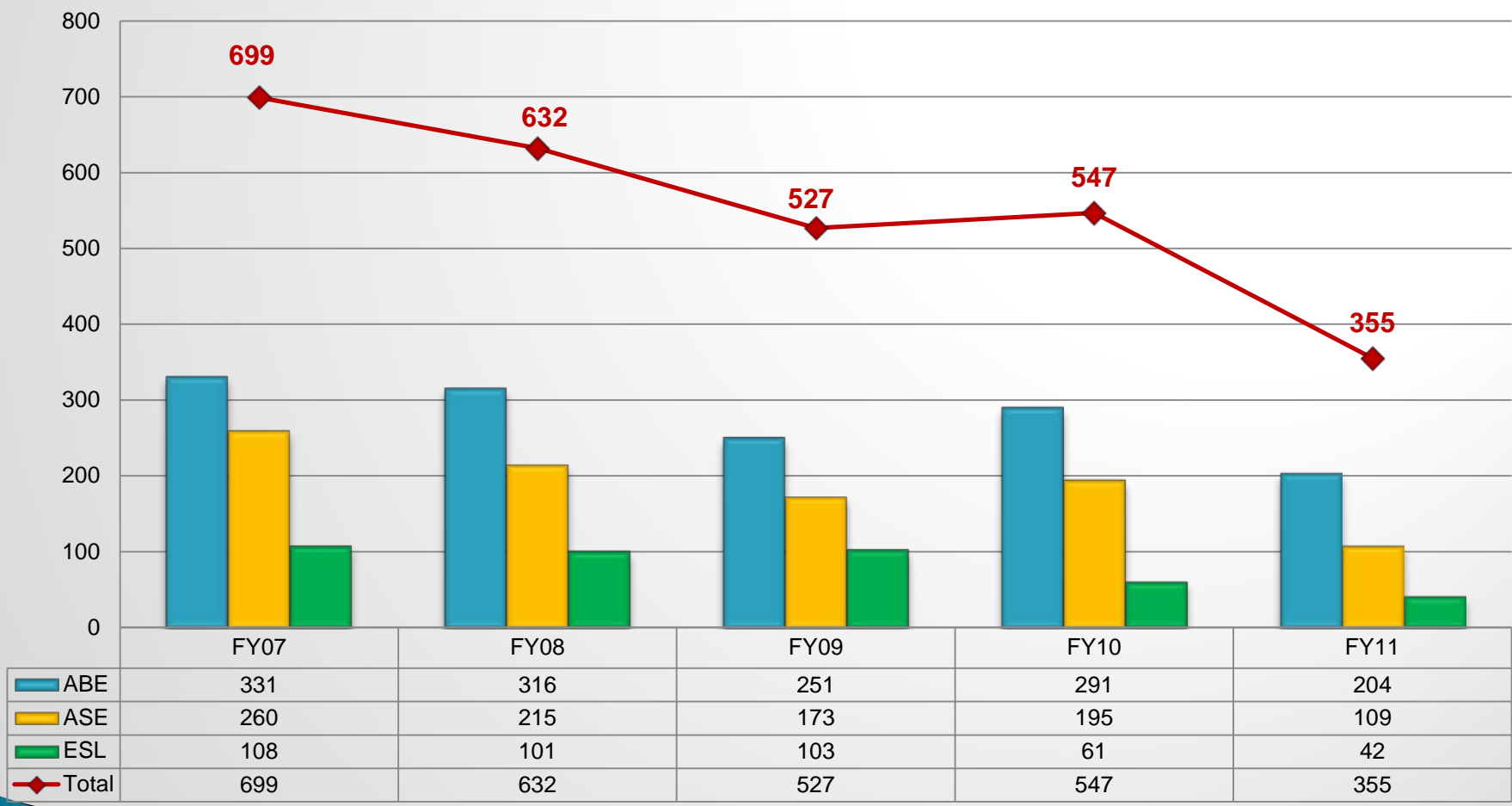
*Need source: David Ault, SIU 10/15/2010*

*Served source: DAISI web-based ICCB system*

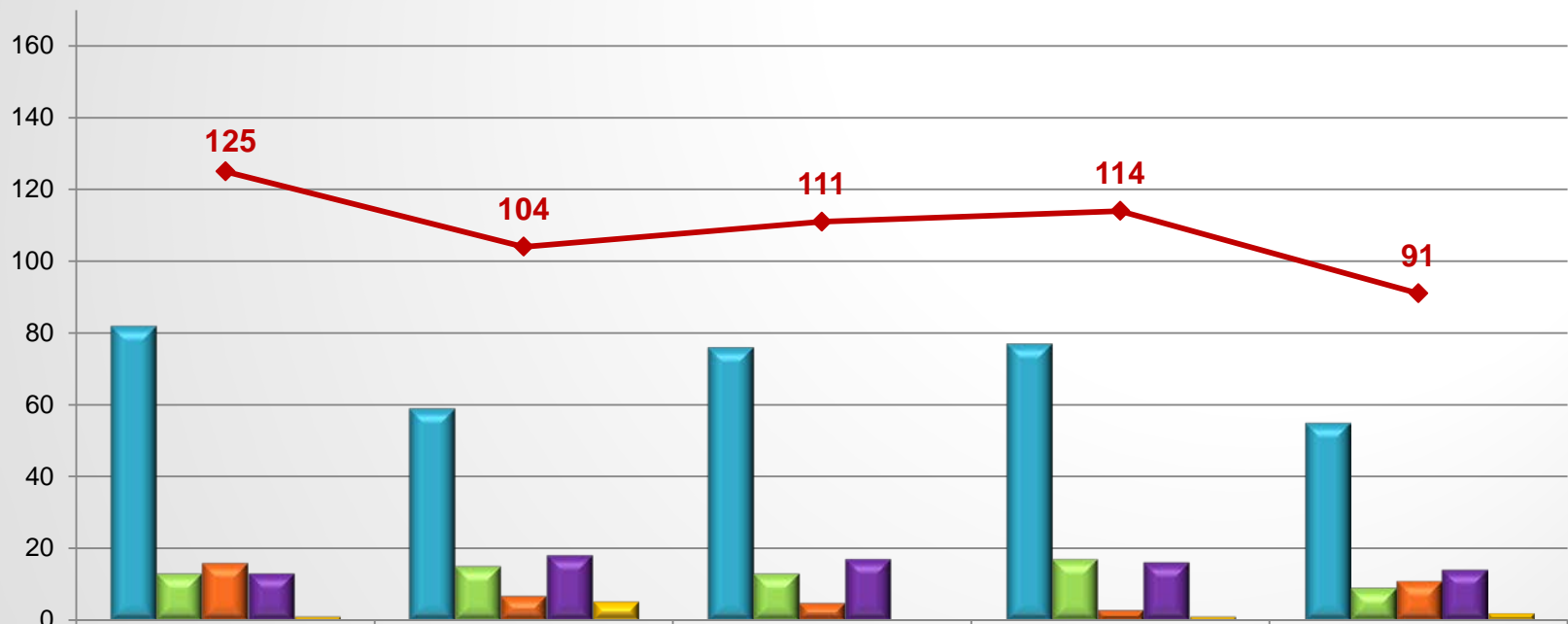
# Adult Education FY11 Students Served by County Location



# Adult Education Students Served by Education Level

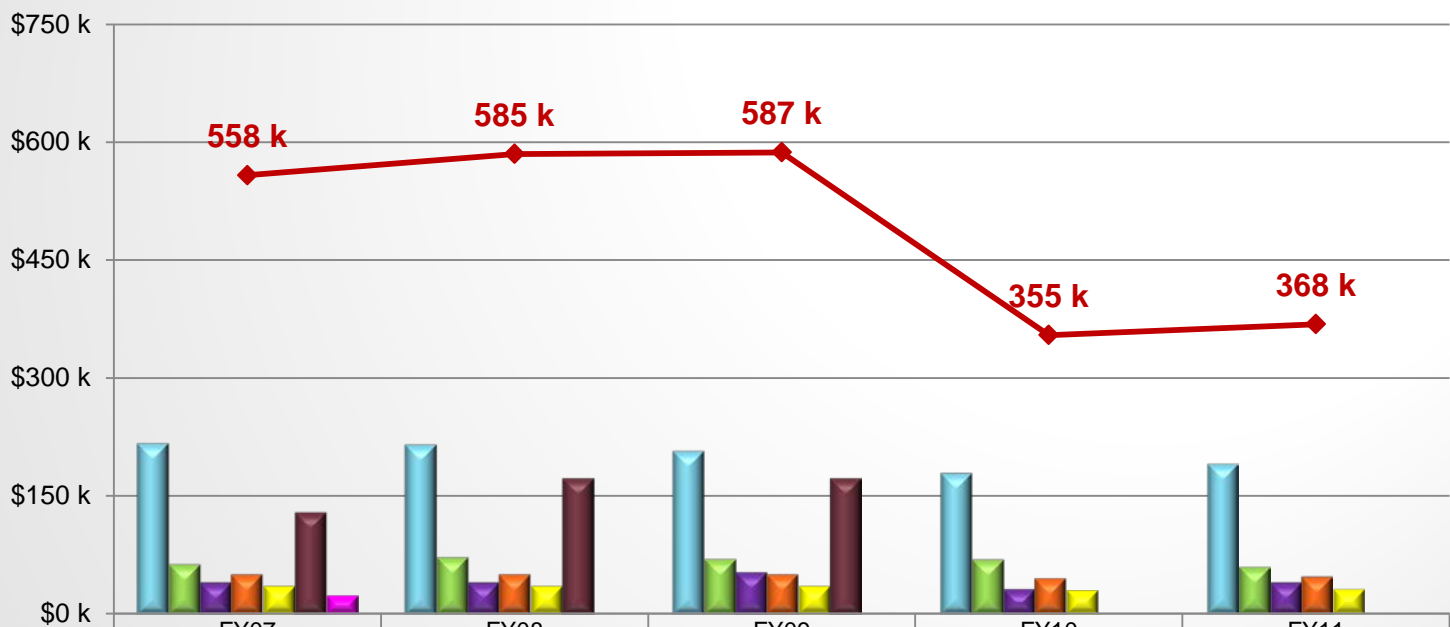


# Adult Education GED Completers by County



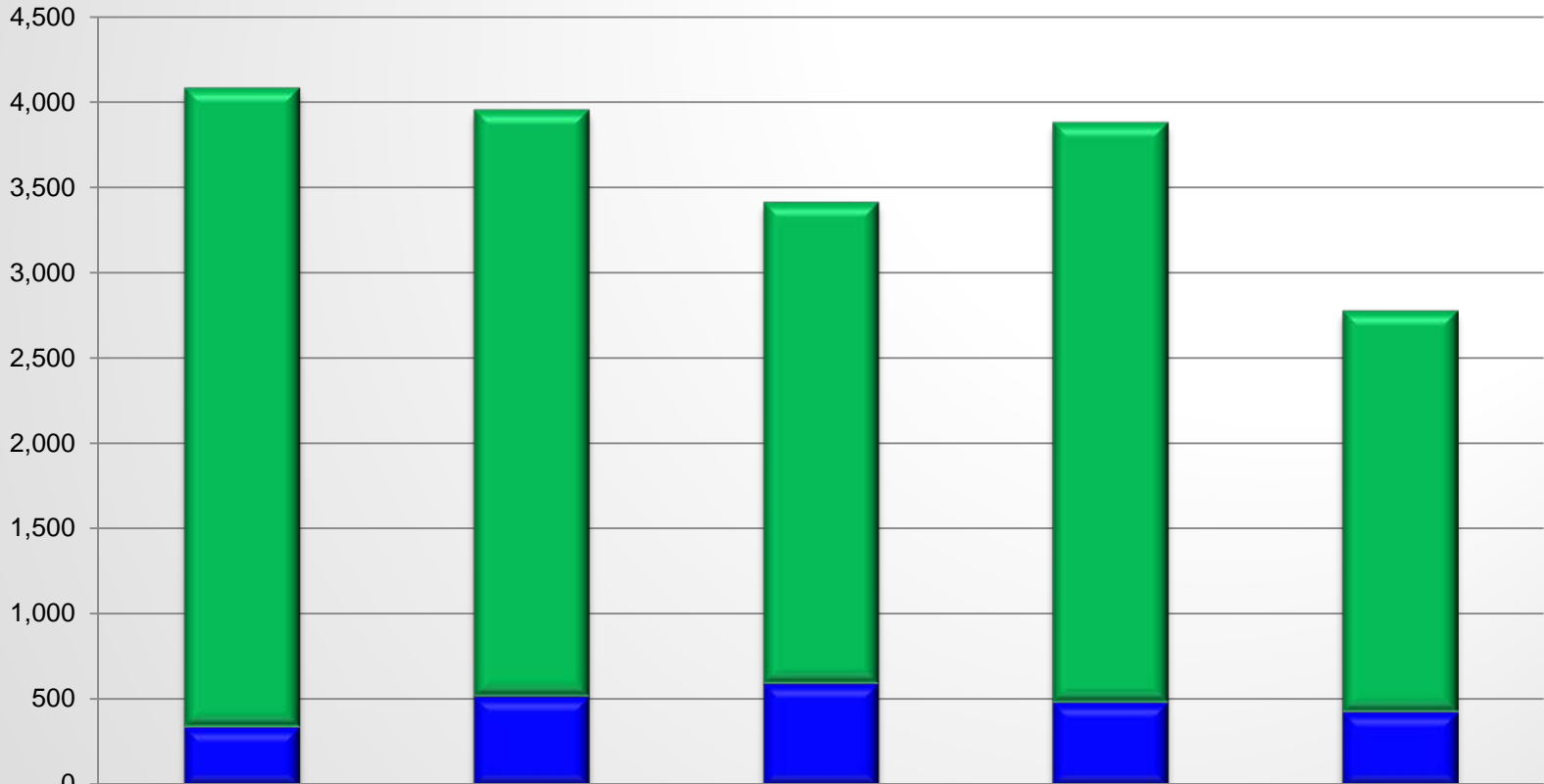
	FY07	FY08	FY09	FY10	FY11
Stephenson	82	59	76	77	55
Carroll	13	15	13	17	9
JoDaviess	16	7	5	3	11
Ogle	13	18	17	16	14
Other	1	5	0	1	2
<b>Total</b>	<b>125</b>	<b>104</b>	<b>111</b>	<b>114</b>	<b>91</b>

# Adult Education Funding – Project Specific



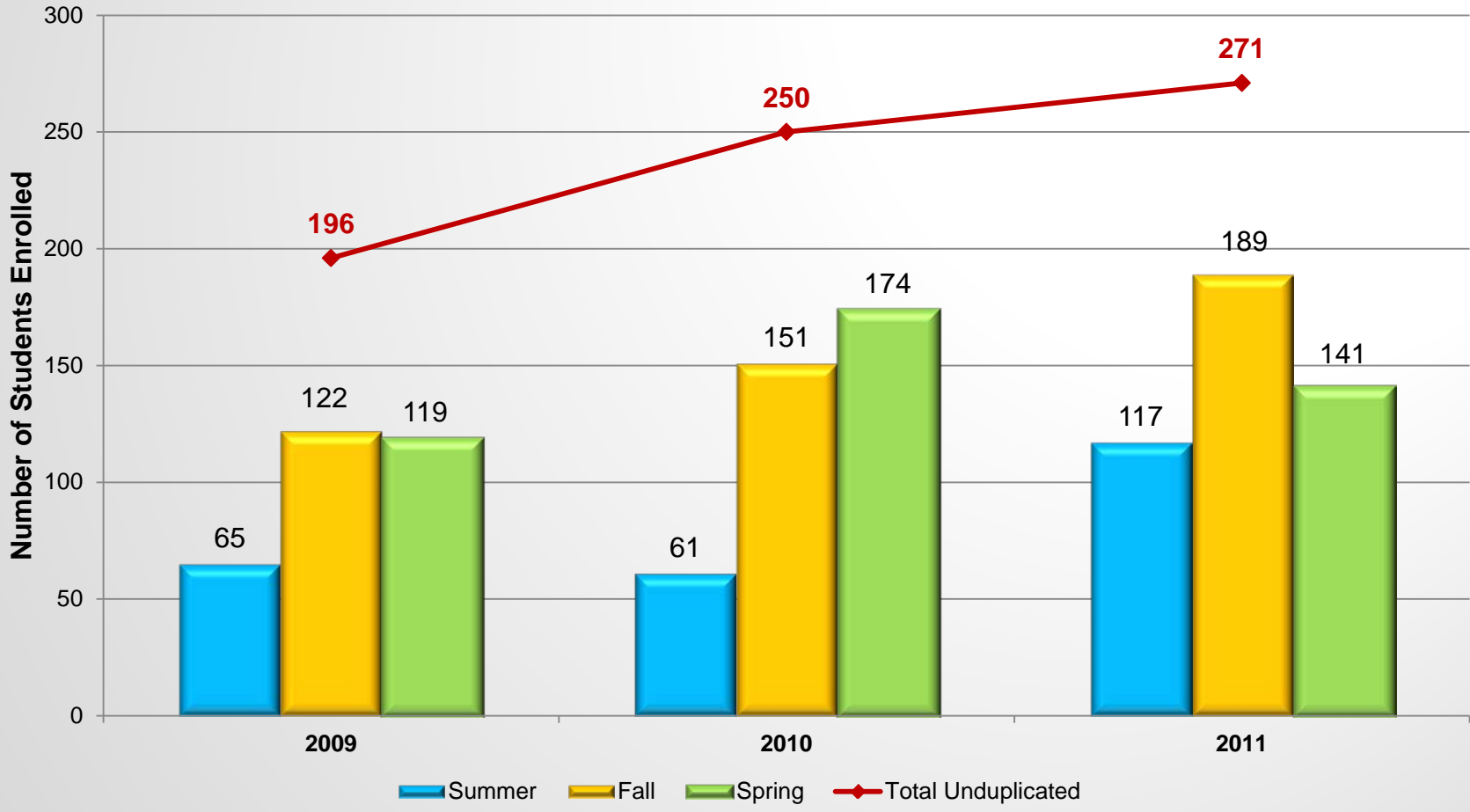
	FY07	FY08	FY09	FY10	FY11
Fed/State/PA/EL Civics	\$216,591	\$215,187	\$206,929	\$178,825	\$190,682
Performance	\$62,818	\$72,005	\$69,467	\$68,998	\$59,551
ICCB General Education Fund	\$40,000	\$40,000	\$52,737	\$31,947	\$40,000
SOS Adult Vol Literacy	\$50,000	\$50,000	\$50,000	\$45,000	\$47,000
SOS Family Literacy	\$35,000	\$35,000	\$35,000	\$29,750	\$31,100
ISBE Even Start Family Literacy	\$129,600	\$172,800	\$172,917		
WIA Title 1B Youth Program	\$23,985				
<b>Total</b>	<b>\$557,994</b>	<b>\$584,992</b>	<b>\$587,050</b>	<b>\$354,520</b>	<b>\$368,333</b>

# Adult Education ICCB Credit Hour Reimbursement



	FY07	FY08	FY09	FY10	FY11
■ Restricted	3,747	3,441	2,822	3,401	2,353
■ Unrestricted	340	518	594	484	429

# Adult Education Students Transitioning to HCC



# Comments ~ Questions?

A better job. A better chance. A better life.  
**EDUCATION**  
Highland Community College  
(815) 599-3460 *Works!*